



MONTHLY MEMBERSHIP PROGRESS REPORT

District 22 W

Results as of: 01/31/2018

GMT: MAHESH CHITNIS

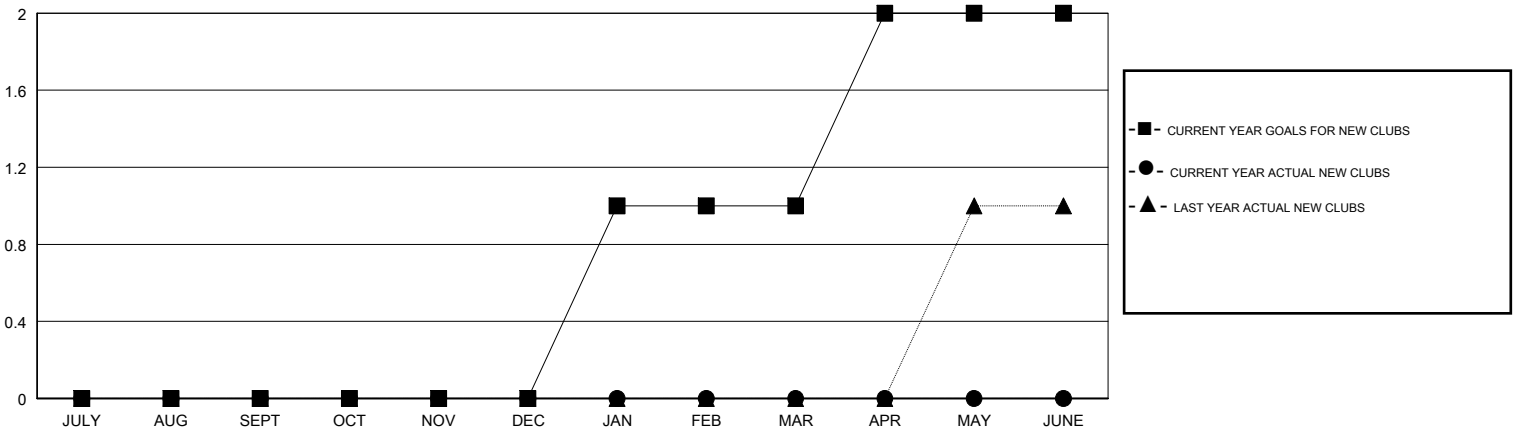
LOCATION MARYLAND

GMT CA

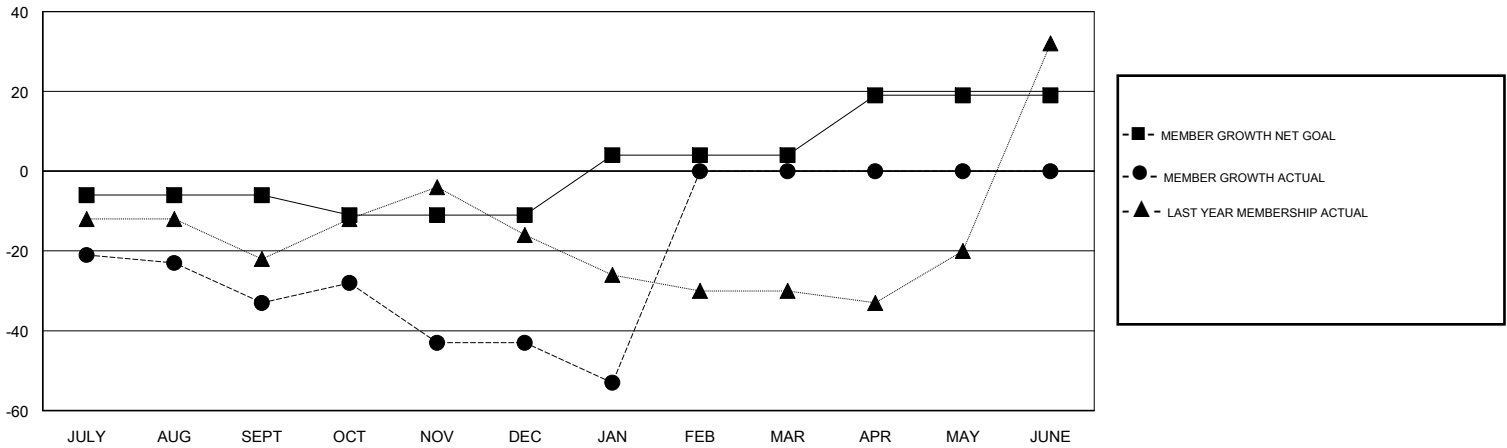
Clubs			
RESULTS FOR 2017-2018			
QUARTER	NEW CLUB GOAL	NEW CLUBS	DROPPED CLUBS
JULY/AUG/SEPT	0	0	0
OCT/NOV/DEC	0	0	0
JAN/FEB/MAR	1	0	0
APR/MAY/JUNE	1	0	0

Members			
RESULTS FOR 2017-2018			
QUARTER	MEMBER GROWTH NET GOAL	MEMBER GROWTH ACTUAL	DROPPED MEMBERS ACTUAL (including transfers)
JULY/AUG/SEPT	-6	29	56
OCT/NOV/DEC	-5	46	52
JAN/FEB/MAR	15	14	23
APR/MAY/JUNE	15	0	0

GOALS AND ACTUAL NEW CLUBS CUMULATIVE



GOALS AND ACTUAL MEMBERS CUMULATIVE



DROPPED CLUBS: 0	33 CLUBS OF 59 ADDED 1 OR MORE NEW MEMBERS	<u>GENDER DISTRIBUTION</u>	
DROPPED MEMBERS		MALE	1,244 (64.79%)
DECEASED	21	FEMALE	676 (35.21%)
CLUB CANCELLED	0	Women Percentage Fiscal Year Goal: 36%	
OTHER	110	TOTAL FAMILY UNIT MEMBERS	508
TOTAL	131	FAMILY MEMBERS PAYING HALF DUES	266

[CLICK HERE FOR CUMULATIVE MEMBERSHIP DATA](#)